

# ***Don R. Wallick Auctions, Inc.***

965 N. Wooster Avenue - Strasburg, Ohio 44680 - [www.WallickAuctions.com](http://www.WallickAuctions.com)

Toll Free: 1-866-348-9446 - Tel: 330-878-0075 - Fax: 330-878-7318

---



**THE TUSCARAWAS COUNTY TITLE COMPANY**

203 Fair Avenue N.E. - P. O. Box 548  
New Philadelphia OH 44663  
Phone: (330) 364-4450 Fax: (330) 343-2976  
Email: tusctitle@tusctitle.net

**TAX AND LEGAL REPORT**

**DATE:** April 27, 2009

**REQUESTED BY:** Don Wallick Wallick Auctions

**PROPERTY ADDRESS:** 5097 Lindentree Rd. Mineral City Ohio

**PRESENT OWNER:** Frank W. Pietro II

**VOLUME:** 1255                      **PAGE:** 536                      **TRANSFER:** May 2, 2007

**PARCEL NO:** 55-00141.000

=====

REAL ESTATE TAXES ARE CURRENTLY LISTED ON THE 2008 TAX DUPLICATE IN THE NAME OF

**Frank W. Pietro II**

**PARCEL NO.:** 55-00141.000  
**DESC.** 1-10-4 PR 14 .75A

**VALUATIONS:**

LAND:            3,280  
BUILDING:       15,070  
TOTAL:           18,350  
AUV:

**TAXES:**

GENERAL TAXES:    \$ 588.48  
TAX REDUCTION:    \$ - 110.59  
10% ROLLBACK:    \$ - 47.79  
2 1/2% REDUCTION \$  
HOMESTEAD CREDIT \$  
TOTAL PER 1/2 YEAR \$ 430.10  
UNPAID REAL       \$  
CURRENT SA:        \$ 6.00  
PENALTY:           \$  
PRIOR DEL:          \$  
TOTAL DUE:         \$ 473.11

Special Assessments: MWCD

Taxes for the first half year 2008 are unpaid  
Taxes for the second half year 2008 are determined but not yet due.  
Taxes for the year 2009 are undetermined but not yet due.

Approved: \_\_\_\_\_  
Not Approved: **X~Red Stamped**

**BY:** Laura J. Andrews

**PRIOR FILE NO.**

This information, including any lot dimensions shown, is derived solely from public records and the internet. While the information is usually reliable, it cannot be guaranteed without a full title examination and a current survey to verify its accuracy.

1 10 4 PR 14 .75A

VALUATION	DATE	ASSESSMENT	FOR CHANGE	AND	FOCAL	31/01/07	3RD QTR	VALUATION
LAND		9380				9380		9380
IMPROV		45340				45340		45340
TOTAL		54720				54720		54720
LAND		3780				3780		3780
IMPROV		12270				12270		12270
TOTAL		16050				16050		16050

CONSTRUCTION DATA	LEVEL	CUBIC	BASE AREA	AREA	FIN AREA	VALUE
FLOOR	1	1.00	560	1.00	360	6020
FLOOR	2	1.00	560	2.00	560	2800
FLOOR	3	1.00	560	2.00	560	2800
FLOOR	4	1.00	560	2.00	560	2800
FLOOR	5	1.00	560	2.00	560	2800
FLOOR	6	1.00	560	2.00	560	2800
FLOOR	7	1.00	560	2.00	560	2800
FLOOR	8	1.00	560	2.00	560	2800
FLOOR	9	1.00	560	2.00	560	2800
FLOOR	10	1.00	560	2.00	560	2800

CONSTRUCTION DATA	LEVEL	CUBIC	BASE AREA	AREA	FIN AREA	VALUE
CONCRETE	1	1.00	560	1.00	360	6020
CONCRETE	2	1.00	560	2.00	560	2800
CONCRETE	3	1.00	560	2.00	560	2800
CONCRETE	4	1.00	560	2.00	560	2800
CONCRETE	5	1.00	560	2.00	560	2800
CONCRETE	6	1.00	560	2.00	560	2800
CONCRETE	7	1.00	560	2.00	560	2800
CONCRETE	8	1.00	560	2.00	560	2800
CONCRETE	9	1.00	560	2.00	560	2800
CONCRETE	10	1.00	560	2.00	560	2800

CONSTRUCTION DATA	LEVEL	CUBIC	BASE AREA	AREA	FIN AREA	VALUE
CONCRETE	1	1.00	560	1.00	360	6020
CONCRETE	2	1.00	560	2.00	560	2800
CONCRETE	3	1.00	560	2.00	560	2800
CONCRETE	4	1.00	560	2.00	560	2800
CONCRETE	5	1.00	560	2.00	560	2800
CONCRETE	6	1.00	560	2.00	560	2800
CONCRETE	7	1.00	560	2.00	560	2800
CONCRETE	8	1.00	560	2.00	560	2800
CONCRETE	9	1.00	560	2.00	560	2800
CONCRETE	10	1.00	560	2.00	560	2800

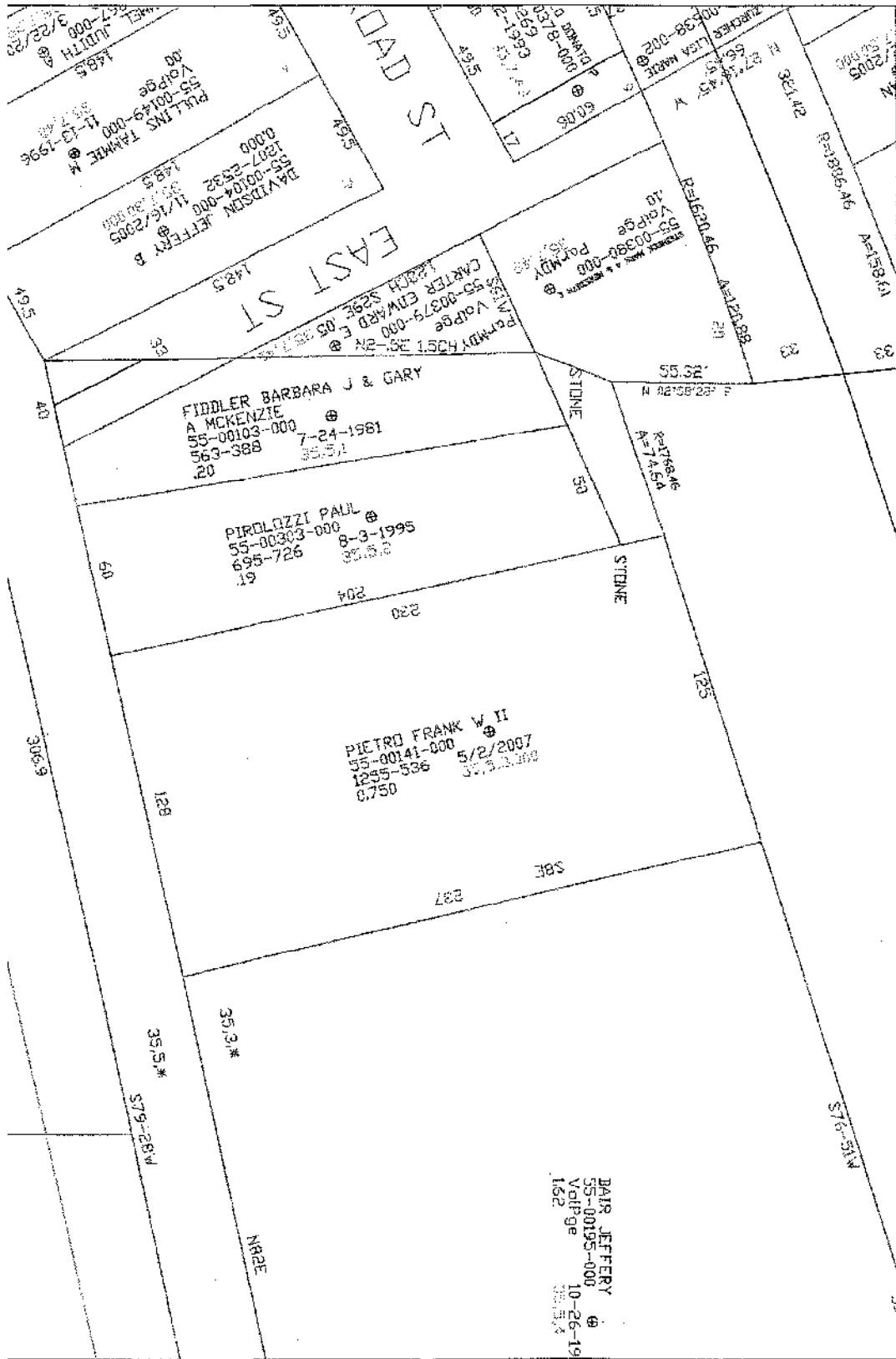
CONSTRUCTION DATA	LEVEL	CUBIC	BASE AREA	AREA	FIN AREA	VALUE
CONCRETE	1	1.00	560	1.00	360	6020
CONCRETE	2	1.00	560	2.00	560	2800
CONCRETE	3	1.00	560	2.00	560	2800
CONCRETE	4	1.00	560	2.00	560	2800
CONCRETE	5	1.00	560	2.00	560	2800
CONCRETE	6	1.00	560	2.00	560	2800
CONCRETE	7	1.00	560	2.00	560	2800
CONCRETE	8	1.00	560	2.00	560	2800
CONCRETE	9	1.00	560	2.00	560	2800
CONCRETE	10	1.00	560	2.00	560	2800

CONSTRUCTION DATA	LEVEL	CUBIC	BASE AREA	AREA	FIN AREA	VALUE
CONCRETE	1	1.00	560	1.00	360	6020
CONCRETE	2	1.00	560	2.00	560	2800
CONCRETE	3	1.00	560	2.00	560	2800
CONCRETE	4	1.00	560	2.00	560	2800
CONCRETE	5	1.00	560	2.00	560	2800
CONCRETE	6	1.00	560	2.00	560	2800
CONCRETE	7	1.00	560	2.00	560	2800
CONCRETE	8	1.00	560	2.00	560	2800
CONCRETE	9	1.00	560	2.00	560	2800
CONCRETE	10	1.00	560	2.00	560	2800

CONSTRUCTION DATA	LEVEL	CUBIC	BASE AREA	AREA	FIN AREA	VALUE
CONCRETE	1	1.00	560	1.00	360	6020
CONCRETE	2	1.00	560	2.00	560	2800
CONCRETE	3	1.00	560	2.00	560	2800
CONCRETE	4	1.00	560	2.00	560	2800
CONCRETE	5	1.00	560	2.00	560	2800
CONCRETE	6	1.00	560	2.00	560	2800
CONCRETE	7	1.00	560	2.00	560	2800
CONCRETE	8	1.00	560	2.00	560	2800
CONCRETE	9	1.00	560	2.00	560	2800
CONCRETE	10	1.00	560	2.00	560	2800

CONSTRUCTION DATA	LEVEL	CUBIC	BASE AREA	AREA	FIN AREA	VALUE
CONCRETE	1	1.00	560	1.00	360	6020
CONCRETE	2	1.00	560	2.00	560	2800
CONCRETE	3	1.00	560	2.00	560	2800
CONCRETE	4	1.00	560	2.00	560	2800
CONCRETE	5	1.00	560	2.00	560	2800
CONCRETE	6	1.00	560	2.00	560	2800
CONCRETE	7	1.00	560	2.00	560	2800
CONCRETE	8	1.00	560	2.00	560	2800
CONCRETE	9	1.00	560	2.00	560	2800
CONCRETE	10	1.00	560	2.00	560	2800

CONSTRUCTION DATA	LEVEL	CUBIC	BASE AREA	AREA	FIN AREA	VALUE
CONCRETE	1	1.00	560	1.00	360	6020
CONCRETE	2	1.00	560	2.00	560	2800
CONCRETE	3	1.00	560	2.00	560	2800
CONCRETE	4	1.00	560	2.00	560	2800
CONCRETE	5	1.00	560	2.00	560	2800
CONCRETE	6	1.00	560	2.00	560	2800
CONCRETE	7	1.00	560	2.00	560	2800
CONCRETE	8	1.00	560	2.00	560	2800
CONCRETE	9	1.00	560	2.00	560	2800
CONCRETE	10	1.00	560	2.00	560	2800



148.5  
 55-00149-000  
 VolPge  
 11-13-1996  
 148.5  
 55-00149-000  
 VolPge  
 11-13-1996

DAVIDSON JEFFERY B  
 1207-2832  
 55-00104-000  
 11/16/2005  
 148.5

FIDDLER BARBARA J & GARY  
 A MCKENZIE  
 55-00103-000  
 563-388  
 7-24-1981  
 35.51  
 20

PIROLOZZI PAUL  
 55-00303-000  
 8-3-1995  
 695-726  
 30.52  
 19

PIETRO FRANK W II  
 55-00141-000  
 1255-536  
 0.750  
 5/2/2007  
 37.53

DAIR JEFFERY  
 55-00195-000  
 VolPge  
 10-26-19  
 162

DAD ST

EAST ST

STONE

STONE

S 71.9-31.1

306.3

35.5\*

579-284

35.3\*

N 82E

128

230

204

38E

237

125

9418.4E  
 A=74.6A

55.52

A=2158.23

9418.4E  
 A=74.6A

55.52

A=2158.23

STONE

STONE

S 71.9-31.1

306.3

35.5\*

579-284

35.3\*

N 82E

128

230

204

38E

237

125

9418.4E  
 A=74.6A

55.52

A=2158.23

9418.4E  
 A=74.6A

55.52

A=2158.23

STONE

STONE

S 71.9-31.1

306.3

35.5\*

579-284

35.3\*

N 82E

128

230

204

38E

237

125

9418.4E  
 A=74.6A

55.52

A=2158.23

9418.4E  
 A=74.6A

55.52

A=2158.23

STONE

STONE

S 71.9-31.1

306.3

35.5\*

579-284

35.3\*

N 82E

128

230

204

38E

237

125

9418.4E  
 A=74.6A

55.52

A=2158.23

9418.4E  
 A=74.6A

55.52

A=2158.23

STONE

STONE

S 71.9-31.1

306.3

35.5\*

579-284

35.3\*

N 82E

128

230

204

38E

237

125

9418.4E  
 A=74.6A

55.52

A=2158.23

9418.4E  
 A=74.6A

55.52

A=2158.23

STONE

STONE

S 71.9-31.1

306.3

35.5\*

579-284

35.3\*

N 82E

128

230

204

38E

237

125

9418.4E  
 A=74.6A

55.52

A=2158.23

9418.4E  
 A=74.6A

55.52

A=2158.23

STONE

STONE

S 71.9-31.1

306.3

35.5\*

579-284

35.3\*

N 82E

128

230

204

38E

237

125

9418.4E  
 A=74.6A

55.52

A=2158.23

9418.4E  
 A=74.6A

55.52

A=2158.23

STONE

STONE

S 71.9-31.1

306.3

35.5\*

579-284

35.3\*

N 82E

128

230

204

38E

237

125

9418.4E  
 A=74.6A

55.52

A=2158.23

9418.4E  
 A=74.6A

55.52

A=2158.23

STONE

STONE

S 71.9-31.1

306.3

35.5\*

579-284

35.3\*

N 82E

128

230

204

38E

237

125

9418.4E  
 A=74.6A

55.52

A=2158.23

9418.4E  
 A=74.6A

55.52

A=2158.23

STONE

STONE

S 71.9-31.1

306.3

35.5\*

579-284

35.3\*

N 82E

128

230

204

38E

237

125

9418.4E  
 A=74.6A

55.52

A=2158.23

9418.4E  
 A=74.6A

55.52

A=2158.23

STONE

STONE

S 71.9-31.1

306.3

35.5\*

579-284

35.3\*

N 82E

128

230

204

38E

237

125

9418.4E  
 A=74.6A

55.52

A=2158.23

9418.4E  
 A=74.6A

55.52

A=2158.23

STONE

STONE

S 71.9-31.1

306.3

35.5\*

579-284

35.3\*

N 82E

128

230

204

38E

237

125

9418.4E  
 A=74.6A

55.52

A=2158.23

9418.4E  
 A=74.6A

55.52

A=2158.23

STONE

STONE

S 71.9-31.1

306.3

35.5\*

579-284

35.3\*

N 82E

128

230

204

38E

237

125

9418.4E  
 A=74.6A

55.52

A=2158.23

9418.4E  
 A=74.6A

55.52

A=2158.23

STONE

STONE

S 71.9-31.1

306.3

35.5\*

579-284

35.3\*

N 82E

128

230

---

**Auction Conducted By:**  
**Don R. Wallick Auctions, Inc.**  
**Auctioneers: Don R. Wallick**  
**Brennan R. Wallick**  
**Ryan W. Wallick**

Don R. Wallick Auctions, Inc.  
965 N. Wooster Avenue  
Strasburg, Ohio 44680  
info@WallickAuctions.com  
<http://www.WallickAuctions.com>



Toll Free: 1-866-348-9446 - Tel: 330-878-0075 - Fax: 330-878-7318